

locksheath
shopping village

NEW
RIVER

LOCKS HEATH SHOPPING VILLAGE

FAREHAM, SO31 6DX

COMMERCIAL PREMISES AVAILABLE



LOCKS HEATH SHOPPING VILLAGE

FAREHAM, SO31 6DX



TOWN CENTRE STATISTICS



132,995

total retail catchment



£3.8m p.a.

comparison goods spend



£6,511 p.a.

average household comparison goods spend



35-44

typical age profile (highest spend)



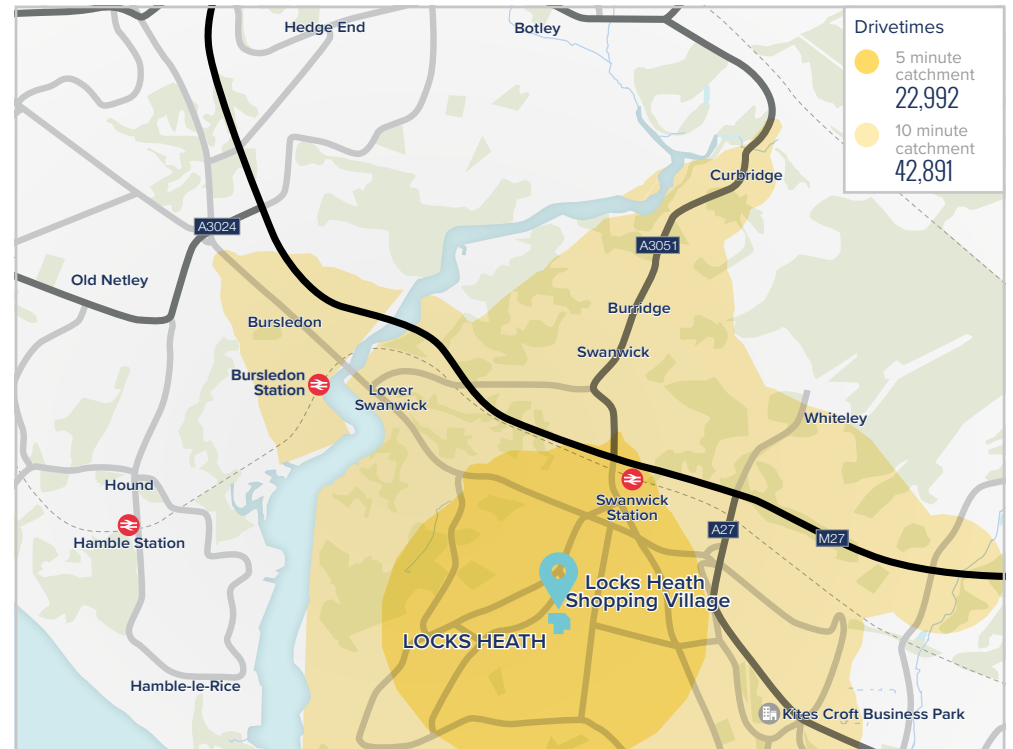
17 mins drive-time

to Portsmouth



1 hour 36 mins train-time

to London





LOCKS HEATH SHOPPING VILLAGE

FAREHAM, SO31 6DX



Car
dominant mode of transport



500
total parking spaces

£19.99
grocery spend

1.2 visits per week
frequency
(UK benchmark - 1.3)

97,900
total sq ft

25
units

76,823
footfall per week

66/34%
female/male



22,992
catchment within 5 minute drivetime



3.2m
footfall p.a.

£26.00
average retail spend



42,891
catchment within 10 minute drivetime

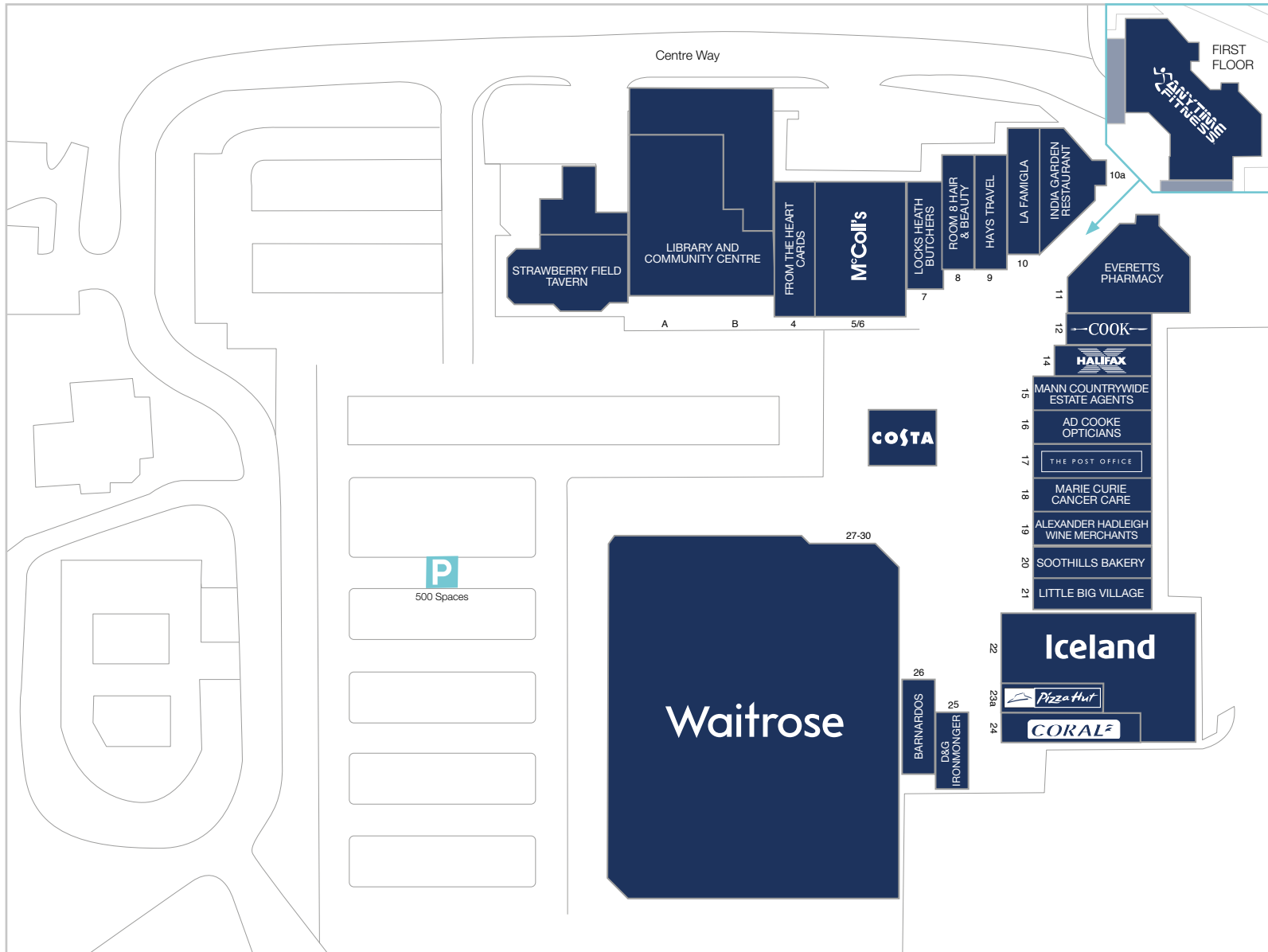


43 minutes
dwell time



1.4
average party size

£7.00
average catering spend



ANCHOR RETAILERS

UNIT	RETAILER	SQ FT
Unit 27-30	Waitrose	40,000
Unit 22	Iceland	6,428
Unit 5/6	McColl's	4,078
-	Costa	1,223

Planning Use Class E Commercial Business & Service

From 1 September 2020 available premises may be occupied as the following without the need for a change of use planning application:

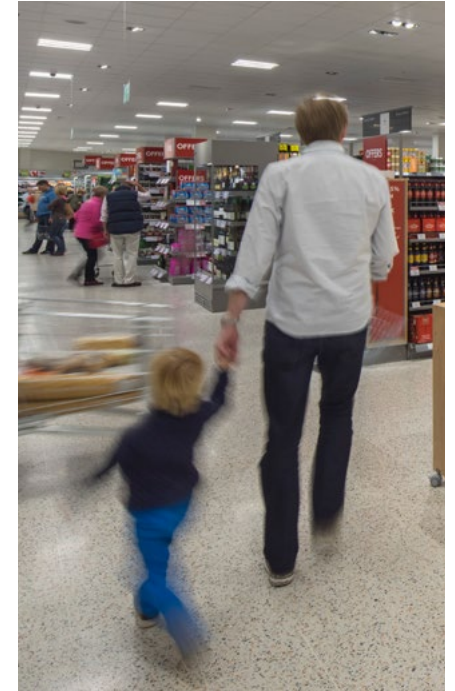
- Shop
- Café / Restaurant
- Nursery / Creches
- Gym
- Medical, such as dental and medical clinics / health centres
- Offices
- Research & Development
- Light Industrial
- Financial and professional services such as an estate agency or recruitment consultancy



LOCKS HEATH SHOPPING VILLAGE

FAREHAM, SO31 6DX

NEW RIVER





LOCKS HEATH SHOPPING VILLAGE

FAREHAM, SO31 6DX

Leasing Agents



Tim Clark - Retail

tclark@hughesellard.com
01329 222 833

Asset Manager



Will Allan

wallan@nrr.co.uk
020 3372 8895

Centre Manager



Sarah Cotton

sarah@locksheathshoppingvillage.co.uk
01489 575 094

Commercialisation Manager

Jackie Tracey

jtracey@nrr.co.uk
07958 015 207

External Links

View full details on
Completely Retail

Locks Heath
website

NewRiver
website

Misrepresentation Act

NewRiver gives notice that these particulars are set out as a general outline only for the guidance of intending Purchasers or Lessees and do not constitute any part of an offer or contract. Details are given without any responsibility and any intending Purchasers, Lessees or Third Party should not rely on them as statements or representations of fact, but must satisfy themselves by inspection or otherwise as to the correctness of each of them. No person in the employment of NewRiver has any authority to make any representation or warranty whatsoever in relation to this property. (March 2017).